

simalube – the automatic single-point lubricator

Technical information on cablecars and mountain railways



simalube

 SWISS MADE

The lubrication expert

Maintenance of cablecars and mountain railways places high demands on the operations managers

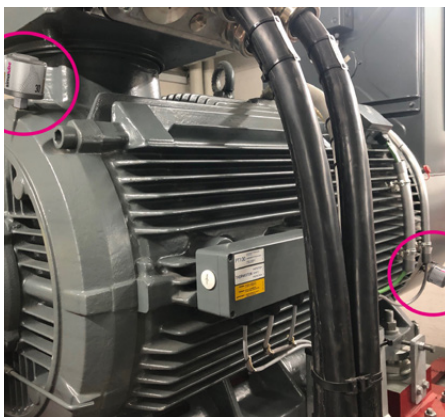
Oftentimes, maintenance operation takes place outdoors - on meter-high poles - which is a difficult task for the maintenance engineer. Extreme temperature fluctuations as well as frost, snow, dirt and moisture make it especially challenging for the machine to run smoothly. A continuous supply of the lubrication points is therefore indispensable, as without regular maintenance, the parts quickly wear or corrode. As a result, significant malfunctions may arise leading to costly repair and maintenance work. Thanks to the simalube lubricator, the service life of the systems is increased massively, thus preventing wear.

Minimize maintenance costs thanks to simalube

Thanks to continuous lubrication by simalube, maintenance on cablecars and mountain railways is reduced and maintenance costs are thereby considerably decreased. The lubricator always supplies the appropriate lubrication points with the optimum lubricant quantity at extreme temperatures, both in winter and in summer. Even difficult to access lubrication points can be supplied permanently. The elimination of manual lubrication also leads to enormous time-saving as all lubrication points are lubricated automatically over a period of 1 to 12 months.

«simalube continuously lubricates and extends the service life of machines»

«Considerable time-savings for maintenance professionals thanks to automatic lubrication»



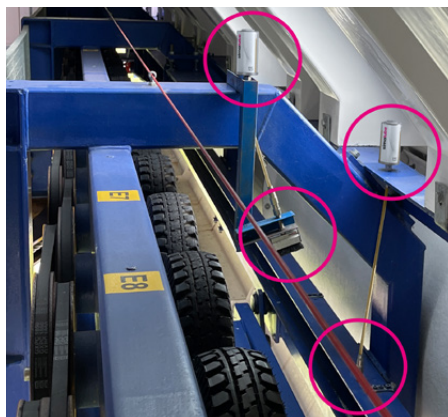
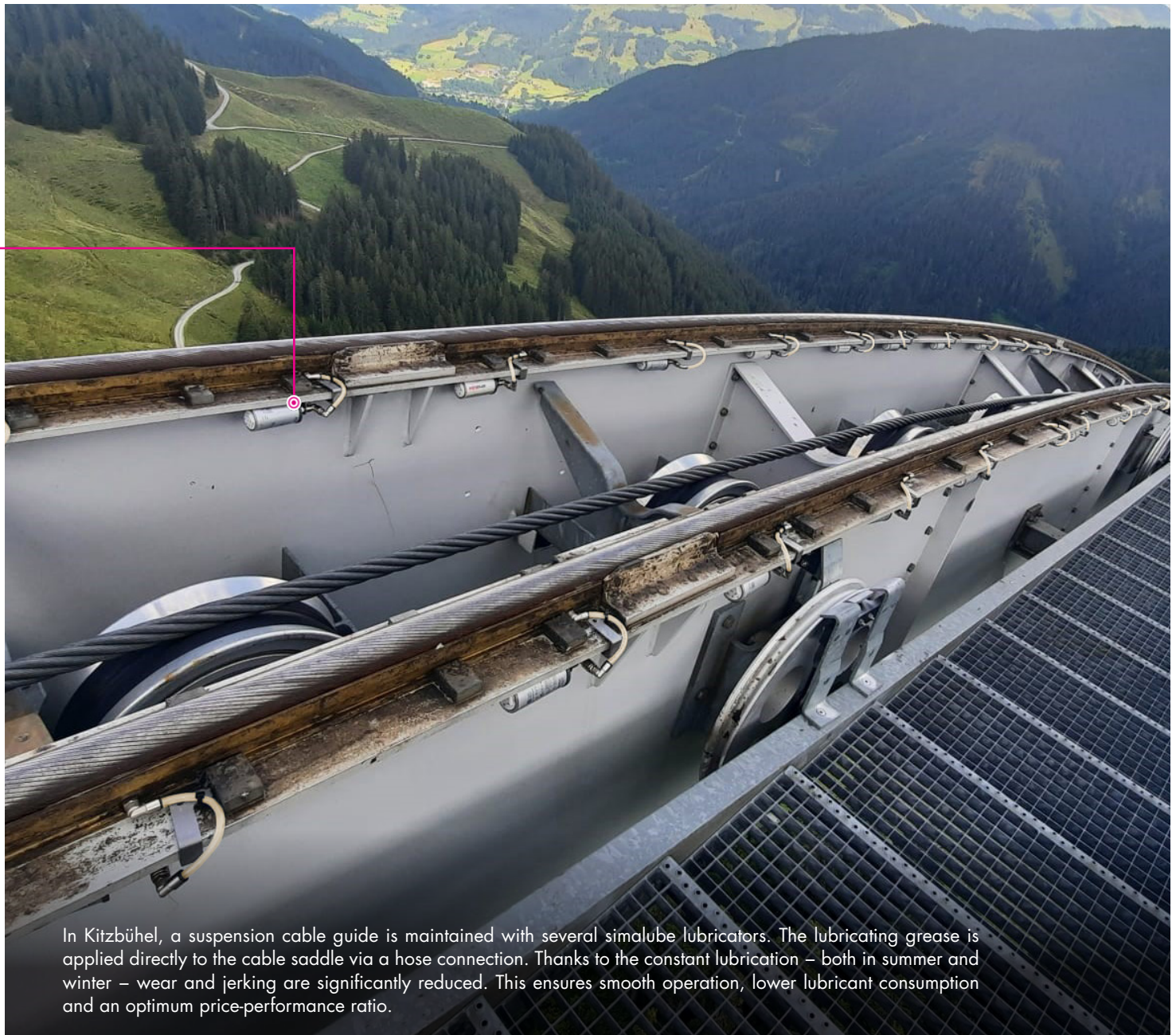
Two simalube 30 ml lubricate the drive motor of a cable car automatically and reliably throughout the season.



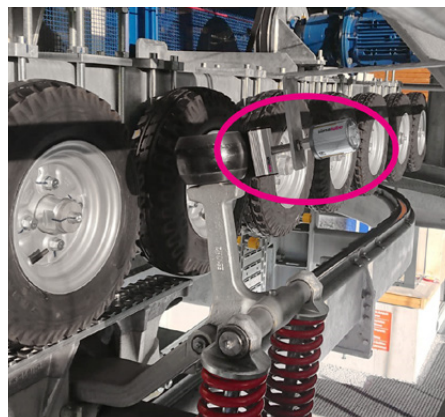
Pulleys can be lubricated automatically, easily and reliably with a 125 ml simalube via a hose.



In the valley station, the deflection roller of a chairlift is lubricated with two simalube 250 ml lubricators.



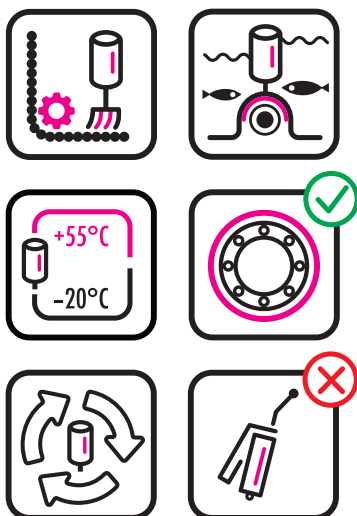
The lubricant is fed from the simalube via a hose into the brush, which then applies a fine film of lubricant precisely to the coupling and guide pulleys.



A 60 ml simalube applies a fine film of lubricant to the coupling rollers via a brush, which reduces wear and eliminates noise in circulation.



With the simalube lubricator, track rollers can be automatically, very easily and continuously lubricated.



Applications and advantages

simalube applications on cablecars and mountain railways:

- Suspension rope guides
- Coupling rollers, track rollers and guide rollers
- Drive and deflection pulleys
- Load cable pulleys
- Drive motors
- Cabin doors
- Aggregates and electric motors (e.g. snow-making systems)

Advantages of the simalube lubrication system:

- Optimised inspection rounds, as only a visual check of the lubrication is required.
- Improved occupational safety, as lubrication is no longer necessary during operation of the system.
- simalube lubricators can be filled with the customer's preferred lubricant.
- Continuous lubricant delivery guaranteed even with strong temperature fluctuations.
- Optimisation of maintenance costs thanks to reduced lubricant consumption and less time required.
- Longer service life of the systems thanks to continuous lubrication.

Videos and other applications:



We will gladly inform you about the application of simalube products on cablecars.

Our highly-qualified specialists have an in-depth technical knowledge and will show you how automatic lubrication can reduce costs and extend the service life of your machines.

simatec inc.

13900-C South Lakes Drive
Charlotte, NC 28273
Tel.: +1 (704) 588-3320
info@simatec-usa.com
simatec.com

simatec